



Manoharbai Shikshan Prasarak Mandal Armori's

**MAHATMA GANDHI ARTS, SCIENCE &
LATE NASARUDDINBHAI PANJWANI COMMERCE
COLLEGE, ARMORI**

Dist. Gadchiroli (Maharashtra) 441 208

Affiliated to Gondwana University, Gadchiroli.

Re-accredited by NAAC 'A' with 3.24 CGPA

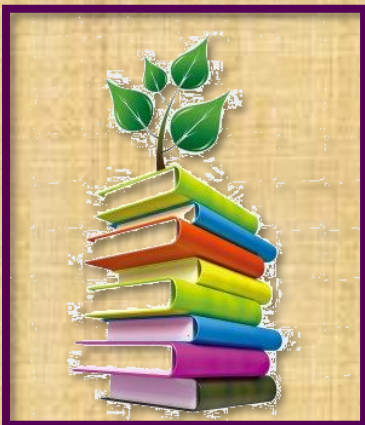
ANNUAL QUALITY ASSURANCE REPORT

AQAR : 2023-2024

CRITERION – I
CURRICULAR ASPECTS

METRIC NO: ~ 1.2.1.

**METRIC NAME: ~Number of Programmes in which Choice Based
Credit System (CBCS)/ elective course system
has been implemented**



**Web: - mgcollegearmori.ac.in
e-mail: - mgcollege.armori@gmail.com
Phone: - 07137-266558**



MANOHARBHAI SHIKSHAN PRASARAK MANDAL ARMORI'S
**MAHATMA GANDHI ARTS, SCIENCE &
LATE NASARUDDINBHAI PANJWANI COMMERCE COLLEGE**



ARMORI Dist. Gadchiroli (M.S.) 441 208
Affiliated to Gondwana University, Gadchiroli
Re-accredited by NAAC 'A' with 3.24 CGPA (2022)
Web: mgcollegearmori.ac.in

Dr. Lalsingh H. Khalsa
Principal & IQAC Chairman
Mob. No. 9422153197
E-mail: lalsinghkhalsa@yahoo.com

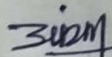
Dr. Satish. S. Kola
IQAC Coordinator
Mob. 9595982057
E-mail: satish.kolawar@gmail.com

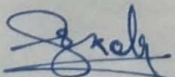
Certificate of Verification

The document herewith is a testimonial of the following specifics;


- AQAR 2023-24
- Criterion - I (Curricular Aspects)
- Metric no. – 1.2.1
- Metric Particular - Number of Programmes in which Choice Based Credit System (CBCS)/ elective course system has been implemented

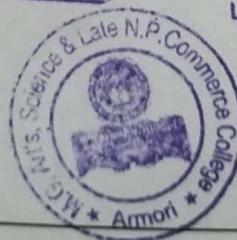
It is affirmed that the attached document pertinent to the above cited specifics are duly verified and approved by the IQAC.


Criterion Head


IQAC Coordinator

IQAC-Co-ordinator


IQAC Chairperson
PRINCIPAL
M.G. Arts, Science &
Late N.P. Commerce College
ARMORI, Dist. Gadchiroli



**MAHATMA GANDHI ARTS, SCIENCE AND LATE N. P. COMMERCE COLLEGE, ARMORI
(AFFILIATED TO GONDWANA UNIVERSITY, GADCHIROLI)**

SYLLABUS (CBCS)

BACHELOR OF ARTS

ALL SUBJECTS	FYBA	https://unigug.ac.in/portal/web_site_attachment/files/New%20Syllabus%20B.%20A.%20Sem%20-I%20%26%20II%20.pdf
	SYBA	https://unigug.ac.in/portal/web_site_attachment/files/B.A.%20CBCS%20III%20%26%20IV%20Update%20180719.pdf
	TYBA	https://unigug.ac.in/portal/web_site_attachment/files/B_A_%20syllabus%20V%26VI%20sem%20221119.pdf

MASTER OF ARTS

HISTORY	M.A. I	https://unigug.ac.in/portal/web_site_attachment/files/M_A%20CBCS%20%20I%20%26II%20sem%20%202019-20.pdf
	M.A. II	https://unigug.ac.in/portal/web_site_attachment/files/Syllabus%20III%20%26%20IV.pdf
ECONOMICS	M.A. I	https://unigug.ac.in/portal/web_site_attachment/files/MA%20Eco%20CBCS%20SemI%20and%20II%20150617.pdf
	M.A. II	https://unigug.ac.in/portal/web_site_attachment/files/Syllabus%20III%20%26%20IV.pdf
MARATHI	M.A. I	https://unigug.ac.in/portal/web_site_attachment/files/MA%20MARATH%20CBCS%20Sem%20I%20and%20II%20150617.pdf
	M.A. II	https://unigug.ac.in/portal/web_site_attachment/files/CBCS%20M_A_%20Marathi%20SemIII%20and%20Sem%20IV.pdf
SOCIOLOGY	M.A. I	https://unigug.ac.in/portal/web_site_attachment/files/socialogy%20sem%20I_SEM-II%20socialogy.pdf
	M.A. II	https://unigug.ac.in/portal/web_site_attachment/files/MA%20Soc%20CNCS%20Sem%20III%20and%20IV(1).pdf

BACHELOR OF COMMERCE

ALL SUBJECTS	FYBCOM	https://unigug.ac.in/portal/web_site_attachment/files/CBCS%20BCOM%20Sem%20I%20%26%20II.pdf
	SYBCOM	https://unigug.ac.in/portal/web_site_attachment/files/BCOM%20Sem%20III%20CBCS(1).pdf
	TYBCOM	https://unigug.ac.in/portal/web_site_attachment/files/B%20Com_Sem%20V_VI.pdf

BACHELOR OF SCIENCE & MASTER OF SCIENCE

LANGUAGES	FYBSC (ENG)	https://unigug.ac.in/portal/web_site_attachment/files/BCom%20Sem%20I%20and%20II%20Comp%20Eng.pdf
	FYBSC (MAR)	https://unigug.ac.in/portal/web_site_attachment/files/BCom%20Sem%20I%20and%20II%20Comp%20Marathi.pdf
	FYBSC (HINDI)	https://unigug.ac.in/portal/web_site_attachment/files/BSc%20Sem%20I%20and%20II%20Hindi.pdf
CHEMISTRY	FYBSC	https://unigug.ac.in/portal/web_site_attachment/files/Chemistry%20Sem%20I%20and%20II%20120617.pdf
	SYBSC	https://unigug.ac.in/portal/web_site_attachment/files/BSc_Chemistry%20Sem%20III%20and%20IV%20CBCS.pdf
	TYBSC	https://unigug.ac.in/portal/web_site_attachment/files/Chemistry%20%20SYLLABUS%20%20final%2031-05-19.pdf
	MSC I	https://unigug.ac.in/portal/web_site_attachment/files/Chemistry%20I%20and%20II%20130617.pdf
	MSC II	https://unigug.ac.in/portal/web_site_attachment/files/MSc%20Chemistry%20CBCS%20Sem%20III%20and%20IV.pdf
ZOOLOGY	FYBSC	https://unigug.ac.in/portal/web_site_attachment/files/Zoology - Sem I and II- PDF converted-converted_1_.pdf
	SYBSC	https://unigug.ac.in/portal/web_site_attachment/files/BSc%20Zoology%20Sem%20III%20%26%20IV%20CBCS.pdf
	TYBSC	https://unigug.ac.in/portal/web_site_attachment/files/Zoology-CBCS- Syllabus for Sem V and Sem VI.pdf
	MSC I	https://unigug.ac.in/portal/web_site_attachment/files/Zoology%20Sem%20I%20and%20II%20130617.pdf
	MSC II	https://unigug.ac.in/portal/web_site_attachment/files/CBCS%20Syllabus%20for%20M_%20Sc_%20ZoologySem%20I%20to%20IV.pdf
MATHEMATICS	FYBSC	https://unigug.ac.in/portal/web_site_attachment/files/BSc%20Mathematics%20Sem%20I%20and%20II%20070817.pdf
	SYBSC	https://unigug.ac.in/portal/web_site_attachment/files/BSc%20botany%20semIII%20%26%20IV%20CBCS.pdf
	TYBSC	https://unigug.ac.in/portal/web_site_attachment/files/B_Sc_%20Botany%20V%20%26%20VI.PDF
	MSC I	https://unigug.ac.in/portal/web_site_attachment/files/GUG%20Sem%20I%20%26%20II-%20Final%20Final%20Syllabus.pdf
	MSC II	https://unigug.ac.in/portal/web_site_attachment/files/GUG%20Sem%20III%20and%20IV%20Final%20Final%20Syllabus.pdf
GEOLOGY	FYBSC	https://unigug.ac.in/portal/web_site_attachment/files/Geology%20Sem%20I%20and%20II%20120617.pdf
	SYBSC	https://unigug.ac.in/portal/web_site_attachment/files/BSc%20Geology%20SEM%20III%20%26%20IV%20CBCS.pdf
	TYBSC	https://unigug.ac.in/portal/web_site_attachment/files/GeologySemV_VI.pdf
	MSC I	https://unigug.ac.in/portal/web_site_attachment/files/Geology%20I%20and%20II%20130617.pdf
	MSC II	https://unigug.ac.in/portal/web_site_attachment/files/MSc%20Geology%20CBCS%20Sem%20III%20and%20IV%20150717.pdf
BOTANY	FYBSC	https://unigug.ac.in/portal/web_site_attachment/files/B.Sc.%20Botany%20I%20%26%20II.PDF

	SYBSC	https://unigug.ac.in/portal/web_site_attachment/files/BSC%20botany%20semIII%20%26%20IV%20CBCS.pdf
	TYBSC	https://unigug.ac.in/portal/web_site_attachment/files/B_Sc_%20Botany%20V%20%26%20VI.PDF
MICROBIOLOGY	FYBSC	https://unigug.ac.in/portal/web_site_attachment/files/Syllabus_MB_CBCS_Sem_I_II.pdf
	SYBSC	https://unigug.ac.in/portal/web_site_attachment/files/Syllabus_B_SC_MB_CBCS_SEM-III-IV.pdf
	TYBSC	https://unigug.ac.in/portal/web_site_attachment/files/UGC_Core_syllabus_SEM_V-VI.pdf
COMPUTER SCIENCE	FYBSC	https://unigug.ac.in/portal/web_site_attachment/files/BSc%20CS%20CBCS%20Sem%20I%20and%20II%20070817.pdf
	SYBSC	https://unigug.ac.in/portal/web_site_attachment/files/B_Sc%20Sem%20III%20%26%20IV%20CBCS.pdf
	TYBSC	https://unigug.ac.in/portal/web_site_attachment/files/BSc_CS_V_VI_Revised.pdf

DIRECTIONS OF CBCS IMPLEMENTATION

B.A.	https://unigug.ac.in/portal/web_site_attachment/files/no%2032(1).pdf
B.SC.	https://unigug.ac.in/portal/web_site_attachment/files/Direction%20No%2029%20of%202017.pdf
B.COM.	https://unigug.ac.in/portal/web_site_attachment/files/BcomDire21122017143938.pdf
B.SC. HOME SCI.	https://unigug.ac.in/portal/web_site_attachment/files/DIRECTION%20NO_BSc%20HomeSci%20310717.pdf
M.SC. (ALL)	https://unigug.ac.in/portal/web_site_attachment/files/Msc%20Maths%20Direction%20120617.pdf
M.A. (MARATHI)	https://unigug.ac.in/portal/web_site_attachment/files/direction%20marath%20cbcs%20150617.pdf
M.A. (ECONOMICS, SOCIOLOGY, HISTORY)	https://unigug.ac.in/portal/web_site_attachment/files/Home%20Economics%20Direction%20310717.pdf

**MAHATMA GANDHI ARTS, SCIENCE AND LATE N. P. COMMERCE COLLEGE, ARMORI
(AFFILIATED TO GONDWANA UNIVERSITY, GADCHIROLI)**

SYLLABUS (NEP - 2020)

MASTER OF ARTS		
HISTORY	M.A. I	https://unigug.ac.in/portal/web_site_attachment/files/B %20A %20Histroy.pdf
ECONOMICS	M.A. I	https://unigug.ac.in/portal/web_site_attachment/files/Economics%20Sem%20I%20%26%20II.pdf
MARATHI	M.A. I	https://unigug.ac.in/portal/web_site_attachment/files/B %20A %20Marathi.pdf
SOCIOLOGY	M.A. I	https://unigug.ac.in/portal/web_site_attachment/files/Name%20of%20Faculty%20Humanities.pdf

MASTER OF SCIENCE		
CHEMISTRY	M.Sc. I	https://unigug.ac.in/portal/web_site_attachment/files/M Sc %20Chemisrty%20NEP%20SEM%20I%20%26%20II.pdf
ZOOLOGY	M.Sc. I	https://unigug.ac.in/portal/web_site_attachment/files/Zoology%20Syllabus%20M Sc%20Semester%20I%20and%20II%20(NEP)%202023-24.pdf
MATHEMATICS	M.Sc. I	https://unigug.ac.in/portal/web_site_attachment/files/M Sc %20Mathematics%20NEP%202020%20final%20syllabus%20to%20nilesh.pdf
GEOLOGY	M.Sc. I	https://unigug.ac.in/portal/web_site_attachment/files/Geology%20Sem%20I%20%26%20II%20Syllabus%20NEP.pdf

DIRECTIONS OF NEP – 2020 IMPLEMENTATION

M.A. (ALL)	https://unigug.ac.in/portal/web_site_attachment/files/Dirction%20No%2034.pdf
M.SC. (ALL)	https://unigug.ac.in/portal/web_site_attachment/files/Direction%20No %2033%20of%202023.pdf